

# CHAIR MONITOR QUICKSTART GUIDE

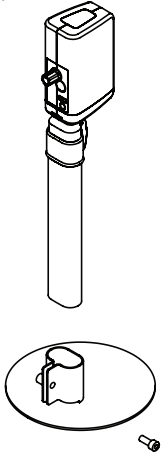
English  
Deutsch

Français  
Español

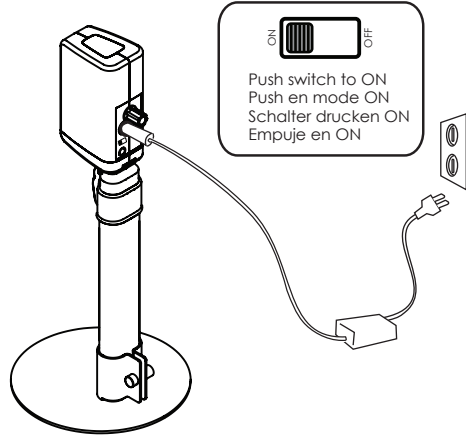
Distributed by:  
**aidacare**  
HEALTHCARE EQUIPMENT

**INMSA-BEAM**<sup>®</sup>  
© 2008 Conseng Pty Ltd

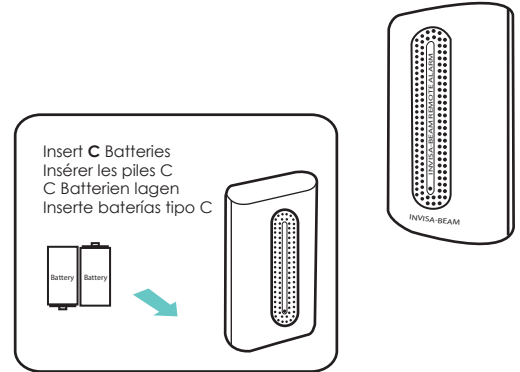
- 1** Assembly  
Assemblage  
Zusammensetzung  
Montaje



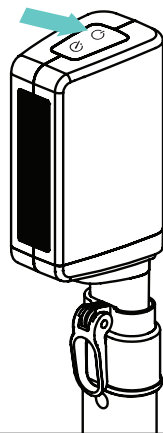
- 2** Charge daily 3 hours(min.)  
Charge quotidienne de 3 heures(min.)  
Täglich 3 Stunden (min.) laden  
Cargo diario de 3 horas (mínimo)



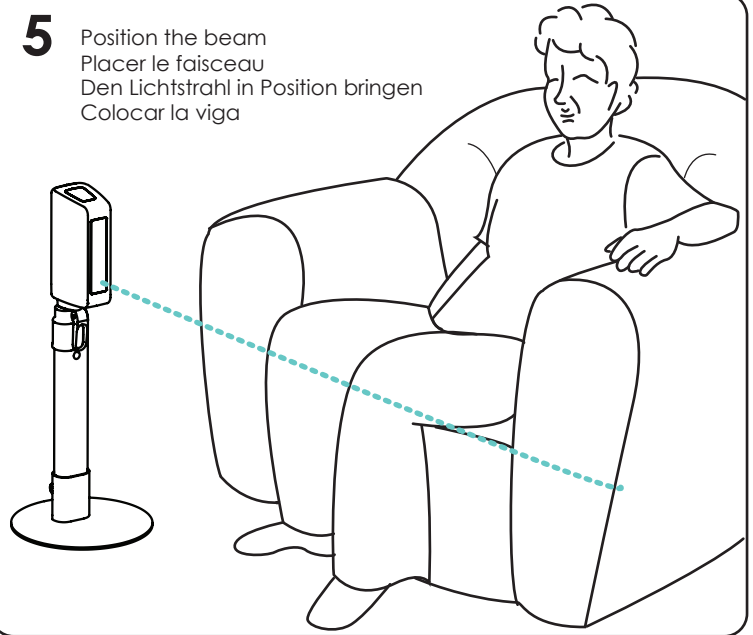
- 3** Locate Remote Alarm  
Recherche d'alarme à distance  
Remote Alarm suchen  
Busque remoto alarma



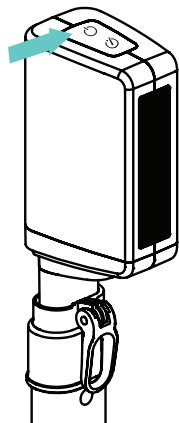
- 4** Monitor **ON** to set beam  
Moniteur **DESSUS** pour placer le faisceau  
Monitor **AN** zum Einstellen des Lichtstrahls  
Monitor **ENCENDIDO** para fijar la viga



- 5** Position the beam  
Placer le faisceau  
Den Lichtstrahl in Position bringen  
Colocar la viga



- 6** Monitor **OFF**  
Moniteur **AU LOIN**  
Monitor **ABSCHALTEN**  
Monitor **APAGADO**



- 7** Monitor **ON** to set alarm  
Moniteur **DESSUS** pour placer l'alarme  
Monitor **AN** zum Einstellen der Warnung  
Monitor **ENCENDIDO** para fijar la alarma

